

MARKET LEADERSHIP FOR OVER 30 YEARS...



Allflex Laza Tags

*Allflex announces the introduction of
NEW Laza Tags.*



All Ear Tags Are Not Created Equal

There are very distinct differences between ear tags. The material that is used, the manufacturing processes and the technology that allows for the two-piece system to be successful varies from manufacturer to manufacturer. These differences make Allflex tags the ear tags of choice for livestock producers around the world.

Allflex developed the world's first successful two-piece ear tag system. Invented by Allflex founder, John Burford, in 1959, the Allflex system holds patents in twelve countries. It is the most widely used tag in the world.

Allflex Tamperproof Tags



*Allflex offers its patented Tamperproof Ear
Tags for the foremost security in livestock
identification and management.*

Better By Design

Allflex tags are molded from a specially formulated polyurethane. This superior material combines flexibility and strength, allowing the animal to free himself from brush or fences without breaking the tag. Allflex tags

remain through seasonal temperature changes, and maintain their flexibility for years. To reinforce the tag at the critical stress point, we've added 68.7% more material at the neck of the tag.

With other tags, the most vulnerable place for breaking is the shaft of the small male. If the tag gets hung up, the typical rigid shaft small male will snap. Allflex has engineered a small male with features that help eliminate this problem and which is central to the superior retention of the Allflex tags. The small male is manufactured from the highest quality material for strength. The shaft is flexible and the material is thicker at the base of the shaft where it joins the small male to reinforce this pressure point. The carefully designed length and precise button diameter both play an important role in the performance of the Allflex system.

Allflex Feedlot Tags

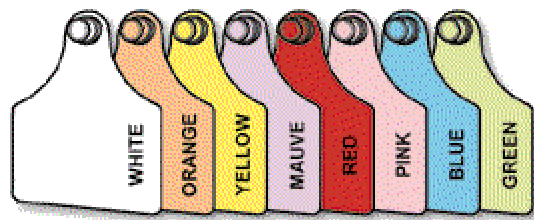


Allflex Feedlot Tags are designed specifically for short-term identification needs.

Allflex invented the first successful two-piece ear tag system. Allflex manufactures three different types of two-piece ear tags, to meet your identification needs. Allflex also manufactures Feedlot Tags, which are designed specifically for short term feedlot use.

LAZATAGS

Heavy investment into local plant allows Allflex to offer the best technology worldwide in laser marking . Allflex has committed itself on this path of development to provide the marketplace with a guaranteed means of individual identification.



Extensive testing with new colour additives has proven the new range of pastel colours outlasts the conventional shades and enhances the marking contrast.

- **Superior quality materials** for enhanced flexibility and performance.
- **New laser marking**: 40 times more durable.
- **Swivel collar** Centre themselves.
- **Proven profile design** out-performs other profiles.
- **New colour range** 8 colours with improved additives.
- **Multiple marking options**: any tag marking possible.
- **Blind male tip** reduces infections.
- **5 Year guarantee** as proof of Allflex's absolute confidence.

Tag Sizes



Button Male



Button Female



Medium Male



Medium Female



Large Male



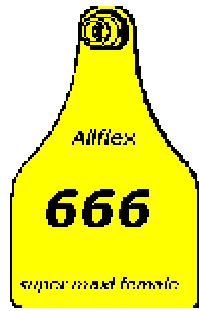
Large Female



Small Male



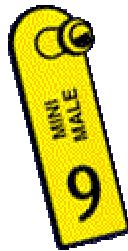
Small Female



Super Maxi Female



Maxi Female



Mini Male



Mini Female



Double Button



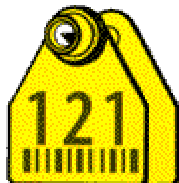
Double Large



Double medium



Double Mini



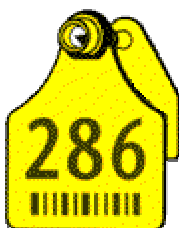
Double Small



Large Female/Button Male



Large Female/Medium Male



Large Female/Small Male





Maxi Female/Medium
Male



Medium Male/Button
Male

Maxi Female/Large
Male



Small Female/Button
Male

FEEDLOT TAGS

The Feedlot tag has been designed as a use specific tag after consultation with Feedlot operators in Australia.

It is a one-piece tag which incorporates many features to allow for easy application, easy identification by pen-riders, large tag panel for recording of data and an expanded range from standard colours.

The tag can be prestamped with Property Identification Numbers, Brands, Bar-Codes and still leave sufficient room for individual lot recording.



Application is with either the manual Flip Out Applicator or for the bigger user a Pneumatic Applicator.

The Manual Flip Out Applicator



The Pneumatic Applicator



As these tags have been specifically designed for Feedlot use, they are not recommended for standard commercial applications.

SHEEP TAGS

Flock tags

- UV Stabilised material. Extra length for easily read numbers and letters.
Simple operation for easy application.
10 bright, highly visible colours for reference at a glance.



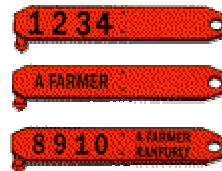
Available Colours



Flock Tags

Flexi-tag and Racemaster tag

- The one piece rapid fire system.
Flexitags are available in ten bright colours, stamped on one or both sides with large easy to read numbers or number/letter combination.
- Options
 - Numbered one face only: up to 4 numbers
 - Named one face only: single line up to 8 letters: double line up to 16 letters.
 - Numbered and named both faces: up to 4 numbers and up to 8 or 16 letters.



Available Colours



Flexi-tags



Racemaster Tags

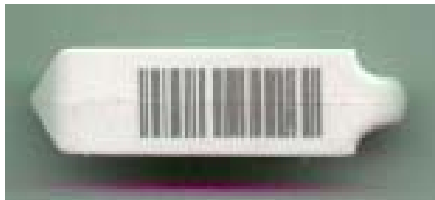
Bar Coded Flock and Flexi Tags

A new addition to the Sheep Tag marking options are Barcoded Tags.

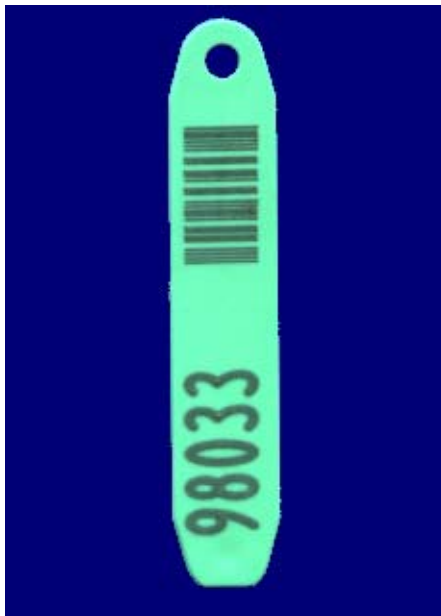
Laser Marking of the Flock and Flexitag has allowed a low cost machine readable product to be available in the market place.

These products will be particularly useful for fibre testing operations, and are interactive with OFDA type measuring devices.

Available in code interleaved 2 of 5 (numeric) or code 128 (alpha numeric)



Flock Tag



Flexitag

SECURITY TAGS

Brass and Nickel security tags provide the ideal backup system.

Brass Security Tags

- **Brass Security Tags can be stamped with up to 13 letters and or digits plus 2 figure year date and up to 5 figure consecutive number or letter number combinations.**



- **Applied with the one-shot applicator**



Nickel Security Tags

- **Nickel plated for higher visibility. Nickel Security Tags can be stamped with up to 13 letters and or digits, plus two figure year date, plus up to 5 figure consecutive number or letter number combinations.**



- **Applied with the one-shot applicator**



MARKING SYSTEMS

Allflex Laser Marking Benefits

Allflex uses leading edge technology to bring you laser marked tags guaranteed not to fade for the lifetime of the animal. A laser beam etches the markings into the plastic material, making it absolutely **PERMANENT**.

Allflex laser marking can accommodate a wide variety of custom identification needs including:

- ✚ Brands
- ✚ Bar Codes
- ✚ Reverse Side Marking
- ✚ Custom Numbering
- ✚ Combinations of letters and numbers



Official/Registration Identification Programs The flexibility of marking options and the absolute permanence of the laser mark has led many Official/Registration Programs to adopt Allflex Laser Marked Ear Tags into their programs.

Official/Registration ID Programs that currently are using Allflex Laser Marked Custom ID Tags include:

- ✚ Holstein Association
Animal Health Board NZ.
- ✚ National F.A.I.R. Program
- ✚ Canadian Cattlemen Identification
Program (CCIA)
- ✚ and numerous mandatory identification programs throughout Europe.

The Allflex Applicator Evolution

Allflex has consistently provided the highest quality Livestock Identification Systems in the world. An important, yet sometimes overlooked, part of any successful Livestock Identification System is the applicator. It is critical to use the correct applicator and proper techniques when applying identification ear tags. The following timeline outlines the Evolution of the Allflex Applicator since the introduction of Allflex Tags in the early 1970's.



NEW Allflex Laza Tags feature several key improvements including: sloping shoulders, self-piercing male components, and a new retention collar on female tags. The added retention collar on Laza Tags makes a recent Allflex Two-Piece Tag Applicator essential! Both the Blue Clip (Orange) Total Tagger Applicator (shown above) and the NEW (Red) Universal Total Tagger Applicator (shown below) are specifically designed to apply NEW Allflex Laza Tags. Applicators manufactured before the Blue Clip (Orange) Total Tagger Applicator are not recommended for use with LazaTags.



(RED) Universal Total Tagger Applicator

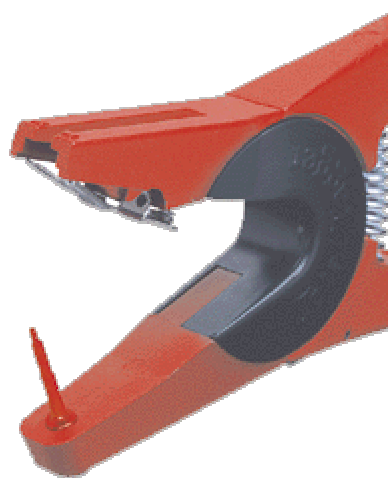
Packaged complete with Spare Pin (Red Blunt) and Black insert.

- ✚ NEW Allflex Laza Tags
- ✚ Allflex Classic Tags
- ✚ Allflex Tamperproof Tags
- ✚ Allflex Electronic Identification Tags
- ✚ & Leading Insecticide Tags

Black Insert/Red Pin
 White Insert/Silver Pin
 Black Insert/Red Pin
 Remove Insert
 White Insert/Red Pin

Insert Removed 

Install Red Blunt Applicator Pin 



Allflex Retract-O-Matic Applicator

The Allflex Retract-O-Matic Applicator features a pistol grip handle that retracts the applicator pin out of the ear before the animal can react. Each of the below Retract-O-Matic Applicators are designed to apply specific Allflex Tag Types.



NEW Retract-O-Matic

- Designed to apply NEW Allflex Laza Tags as well as the Tamperproof Maxi Female and Tamperproof Large/ Medium Female Tags.



Classic Retract-O-Matic

- Designed to apply Allflex Classic Tags.
- The Classic Retract-O-Matic Applicator can be converted to apply Allflex Laza Tags by changing the Applicator Pin to a Blunt Retract-O-Matic Applicator Pin and changing the Anvil to a Black Retract-O-Matic one.

FEEDLOT APPLICATORS

Application is with either the manual Flip Out Applicator or for the bigger user a Pneumatic Applicator.

The Manual Flip Out Applicator



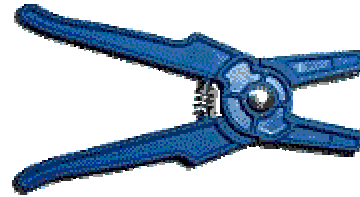
The Pneumatic Applicator



As these tags have been specifically designed for Feedlot use, they are not recommended for standard commercial applications.

SHEEP TAG APPLICATORS.

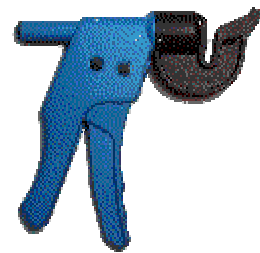
**Flexitagger Single Shot
Applicator**



**Fleximatic 25 shot rapid
fire applicator**



Flocktagger Applicator

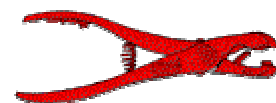


**Racemaster Auto
Applicator**



SECURITY TAG APPLICATORS

***Both Brass and Nickel are applied with the
one-shot applicator.***



ACCESSORIES

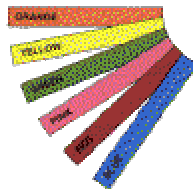
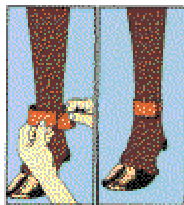
Tag Pen 2 Tip Broad & Fine.



Black Only

Leg Bands

Sold by pack of 20-(4 colours: Red, Blue, Orange, Green or one individual colours).



Velcro Leg Bands

-Easy to apply, showing your ID in bright colours to show for example mastitis treated cows.

Ankle Straps



Blank-in **Yellow** White **Orange** **Blue** **Green** Ankle Straps for marking your own with the Black Allflex Tag Pen



Yellow Ankle Straps with black 'hot stamped' numbers-in 'sequence' or as 'selected numbers'



Special "caution" Ankle Strap (in flame red) assists in identifying those animals under medication



Special 'Dry Cow' Ankle Strap (in **Blue**)

Allflex Device Specifications

Allflex tag options

Allflex have developed the worlds most widely accepted ear tag for the electronic identification of livestock. In excess of 6 million cattle worldwide have been identified with this Allflex high performance identification tag.

The Benefits

- The World standard for Production Livestock Electronic Identification
- Non- Intrusive to the animal
- Ease of Application
- Ease of recovery at slaughter
- Designed to withstand rugged environments
- Best read range: 1.2 meters

Allflex have Two types of tags accredited under the NLIS scheme.

- Breeder tag (white tag) can only be attached by the breeder before the animal leaves its property of birth
- Post-Breeder tag (orange tag) are attached to cattle that are no longer on the breeder's property, and are not identified with a breeder device.



What numbers are on the tags?

The NLIS number is shown on the outside of the tag. This number is either a 15 or 16 digit number. The structure of the number is as follows:

8 characters PIC (tail tag) number of the property issued with the tag

1 character Manufacturers code

1 character Tag type (breeder or post breeder)

1 character Year of manufacture

4 or 5 characters Individual animal number (Producers can choose 4 or 5 numbers)

Tail tags identify the property of origin and do not require matching to ear tags.

Example

3ABC1234XBW12345

WHERE:

3ABC1234 = 8 digit Property Identification Code (PIC)

X = Manufacturers code , X = Allflex

B = Tag Type , B = Breeder tag , E = Post Breeder tag

W = Year Number, W = 2001

12345 = Five digit Individual animal number

Can I order tags with particular numbers on them to fit in with the numbering system I already have in place?

The last 4 or 5 digits of the NLIS number (see above) are for the individual animal number. These numbers are able to be defined by the person ordering the tags. For example, you may wish the first number to be a year number and the remaining numbers to be for individual ID. When ordering, specify the starting number for the sequence e.g. 400 tags starting at 92000.

Matching Management Tag Option

Allflex offer the flexibility of a Matching Management Tag option to be linked with the NLIS Electronic tag

Benefits of matching management tags

1. It is a unique tamperproof tag unavailable commercially
2. It will be your Transaction tag eliminating the need for you to obtain a transaction tag on moving the stock off your property
3. The management tag will display your property number plus links into the animal's unique serial number.
4. The management tag will come in a packaged set to ensure both tags applied to a animal have the same number
5. Quick and easy identification in paddock , yard or race.
6. Available in 3 sizes and 9 colours

Allflex[®]

MATCHING TAMPERPROOF



MANAGEMENT TAGS

DON'T be left at cross purposes when applying your Electronic Tags.
Order your Matching Management Tags for your visual identification and keep the link with your Electronic Number and the National Database.
Matching Management Tags are printed with your Property Identification Code (PIC) and unique management number, as recorded on the National Database.
Your unique Tamperproof Matching Management Tags will come in a packaged set to ensure both tags can be quickly and easily applied at the same time.

The Perfect Match



Matching Management Tags come packaged with your Electronic Tags in a specially designed plastic tray divided into perforated segments. When snapped apart, each segment contains the Electronic Tag and Matching Management Tag uniquely and individually printed for ease of application.

The Smart Choice



Matching Tamperproof Management Tags

Allflex Matching Management Tags are available in three (3) sizes and nine (9) colours: Medium, Large and Maxi with a button Male, or choose your own combination.

• Large with Male Button

• Maxi with Male Button

• Medium with Male Button



3 Main Sizes

Unique Tamperproof Design

Uniquely Packaged with Electronic Tag

9 Main Colours

ACT NOW! BE EU READY

"You must individually, permanently and electronically identify all cattle on the accredited farm at the end of twelve month's accreditation."



Orange Post-Breeder Tag



White Breeder Tag

The National Livestock Identification Scheme (NLIS) is an Industry Initiative. So, take the initiative, don't just tag your animals, Electronically Identify your stock and GET THE BENEFITS.

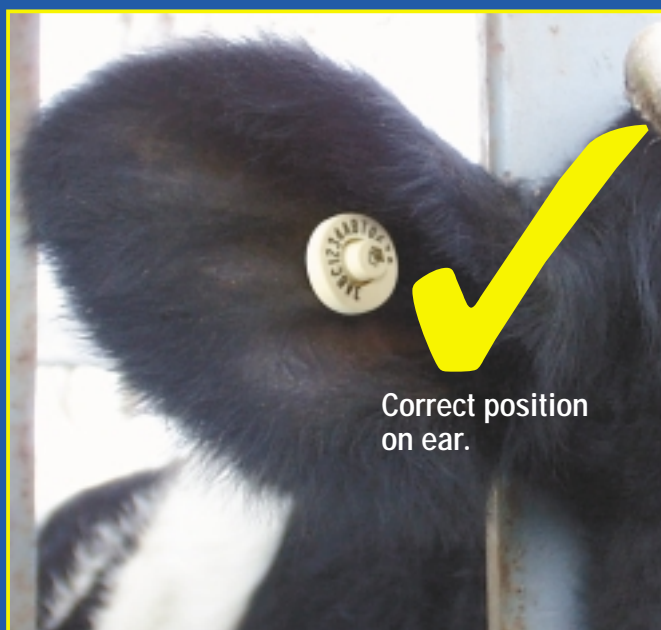
IMPORTANT
YOU MUST FOLLOW THE APPLICATION INSTRUCTIONS PROVIDED
WHEN APPLYING YOUR ELECTRONIC TAGS

Order Your Total Package Today

Allflex Australia Pty Ltd.
A.B.N.61005237472
12 Steel Place, Morningside, Brisbane, Queensland 4170, Australia
PH: (07) 3899 9055 Fax: (07) 3899 9034



Instructions for application of **Allflex Electronic Identification**



IMPORTANT: failure to read this may result in tag damage
Position the tag so the raised area of the tag is at the front, or open end, of the Applicator. The raised area of the tag must be at the front of the applicator during application, otherwise damage may occur to the tag componentry.

Only the **red electronic tag applicator** can be used to apply Allflex Electronic Ear Tags

Electronic Identification - Readers

Allflex has readers to suit all kinds of situations. There are two main categories FIXED (Panel Readers) & PORTABLE (Hand Held Readers)

Panel Readers:

Allflex Raceway Reader -

Allflex Raceway Reader: This high powered unit is mains powered and can achieve reads up to 1.2 metres with HDX tags

Allflex Integrated Panel Reader -

This is the latest generation of Allflex readers, a compact unit that incorporates the reader and antenna together. The unit is powered directly from most leading brand scales, achieving up to a 850mm read range with HDX tags.



Handheld Readers:

Allflex Portable Reader -

Light weight design, ideal for the Vet or Stock Agent. This unit has a memory, audible read notification and LED display. A charger and communications kit is available.



Allflex Pocket Reader -

- Unit has LED display and a audible read notification. This reader is easily fits into a shirt pocket.



Allflex Stick Reader -

- Lightweight ergonomic design that can be powered directly from most leading brand scales. Unit has a memory and download facility, LED notification of read.



Tamperproof Tags (single use)

■ The Tamperproof Electronic Tag is designed for official use in a "closed System" where integrity of the information is paramount. Allflex Tamperproof tags are widely used in Official Schemes.



The design of the tag allows for a single use application, the internal security code ensuring the device is applied to only the assigned animal. Unique ISO coding encrypted into the tag prevents overwriting of the number, and a manufacturer's code precedes the actual number string. (Allflex ISO manufacturing code = 982)

Non Tamperproof Tags (reusable tags)

■ The reusable tag is industrial coded (not ISO coded). This allows for tag removal at or prior to slaughter. The tag is fully sealed so allows for sterilization and reattachment to the next assigned animal.





NEW GENERATION SHEEP IDENTIFICATION FROM ALLFLEX.

Electronic ID with Lightweight Transponder.





Objective.

- To offer to the Sheep Industry of Australia, a solution to Auto-Capture Individual Animal Identification as a means to provide accurate data interface with existing or planned management software packages.



The Technology.

- As the device utilizes passive technology, there is no battery in the device to run down.
- The benefits of a passive transponder allow for multiuse of the tag over a number of cycles.
- With a simple replacement of the male stem the tag can be reinstated on another animal, after the initial recipient has been culled from the flock.



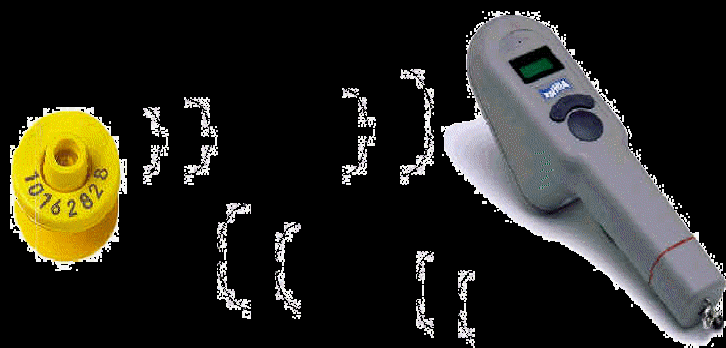


The Technology.

The Handheld Reader will emit a radio signal that will excite the transponder releasing the embedded electronic back to the reader.

The reader can be a Handheld as shown or come as a Wand or Panel type device.

All interface via a 232 connection to Laptop or Weigh Scales.





Benefits of Electronic Identification.

- Electronic ID allows for total integrity.
- Opens the option to automate operations such as drafting/weighing.
- Will interface with leading management software packages.
- Reduces the level of stress the animal is presented with.



Auto Drafting/Weighing

- Racewell products are one of the many providing pneumatic options for drafting operations.





Auto Drafting/Weighing

- The Racewell product is connected to an autodrafter and weighing system, to allow for quick, accurate preselection into nominated weight groups.
- The air operation alleviates the physical effort associated with operating similar handlers.
- A handheld remote enables the unit to be operated by one person.
- The crush capture allows for all husbandry work to be undertaken.